



IRB 360 NEWSLETTER

ISSUE 2023/03

Connecting Research with Ethics

01 HBRA: Human Limits of Performance/Endurance

The meaning of 'Human Biomedical Research' in HBRA includes any research intended to study "the performance or endurance of human individuals". This clause relates to the testing of **Human Limits** of performance and endurance (*including mental, physiological, and physical functions*) – e.g., research activity that *deviates from an average person's everyday routine*.

More information is available in our NTU-IRB guidelines. Also, an example of "human limit" can be found in MOH's 'HBR Decision Tool'.



**NTU-IRB
Guidelines**

**MOH's
HBR Decision Tool**



Research that is intended to study:

- (a) the prevention, prognostication, diagnosis or alleviation of any disease, disorder or injury affecting the human body
- OR
- (b) the restoration, maintenance or promotion of the aesthetic appearance of human individuals through clinical procedures or techniques;
- OR
- (c) the performance or endurance of human individuals

Yes

No

The methodology involves:

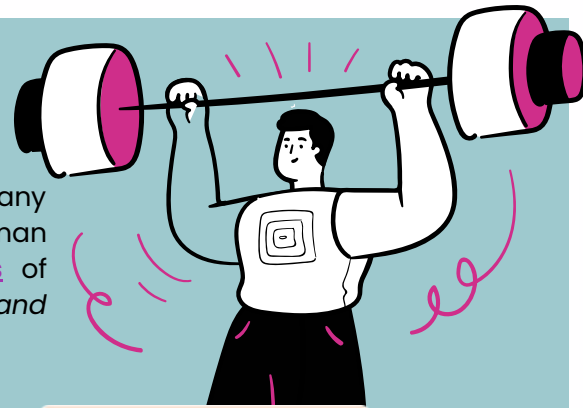
- (i) subjecting an individual to any intervention that has a physical, mental or physiological effect on the body of the individual;
- OR
- (ii) the use of any individually-identifiable human biological material;
- OR
- (iii) the use of any individually-identifiable health information.

Yes

No

**Yes.
Under
HBRA.**

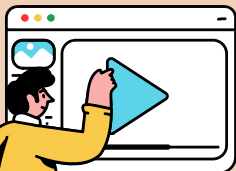
Not under scope of HBRA.



On 8 March, the NTU-IRB held a workshop on topics such as: What is 'Human Subjects Research'; the differences between 'Exempt, Expedited, Full Board'; and the IRB's Review Process.

Our attendees also received valuable insights on common issues that can delay IRB reviews, and how to obtain faster IRB approvals.

02 NTU-IRB SBER Workshop 2023: Slides & Session Recording



For those who couldn't make it, fret not! We've got you covered – the **session recording & slides** are now available to view at your convenience.

Click [here](#) for session recording and slides.
(Under Recent Events)



Stay tuned for our next newsletter to learn more!

To subscribe to our mailing list and for further queries, please write to IRB@ntu.edu.sg

Brought to you by:
Research Integrity and Ethics Office (RIO)

Refer to our website for more information on IRB Guidelines [here](#).

